



Guyana's Hemp Industry Launch Q&A-Deck


If a license is granted for a trial project of 100 acres, who will undertake the project?

- *A Trial plot would be a partnership operation between The GHA, Colorado Hemp Project, and EAME. All the member Hemp Associations across Guyana will be requested to participate in the project.*
- *Ideally, the designated lands will split between all the different Hemp Association regions for the ability to grow different strains.*
- *Organizations involved in various capacities:*
 - *Government of Guyana*
 - *Guyana Hemp Association & Members*
 - www.GuyanaHemp.com
 - *Neurvana International*
 - *Colorado Hemp Project*
 - www.ColoradoHempProject.com
 - *EAME – Earth & Marine Environmental Consultants*
 - www.EAME.co.uk
 - *Tetra Group*
 - *University of Guyana*

Which varieties and quantities will be planted?

- **Ideally not a single 100 acre lot**

- It is requested that the 100 acre of trial plot be sectioned off in the various production zones of The GHA member associations.
- This will allow for different kinds of genetics for different kinds of end products to be produced.
- The strains used will be tailored to Guyana's different types of typography/geography, soils, and weather patterns in the various regions.
- For different kinds of genetics for different kinds of products.



Where will the seeds be imported from, and reason for that origin?

- Origin will be Colorado or Jamaica
 - The genetics that to be used will be determined by Colorado Hemp Project's representatives, and will be sourced from their seed banks in Colorado or Jamaica.

What is the cost of the seeds for the 100 acres, and the quantity?

- 10 acres of CBD
 - 1700 seeds per acre (5'x5' spread)
 - Feminized
 - \$1-\$5 per seed (min. 2000 seeds)
- 90 acres of Industrial Hemp
 - 5-15 lbs of seed per acre
 - More Dense – Fiber
 - Less Dense – Grain
 - Bi-crop (Grain and Fiber)
 - Approx. \$10 per lbs

Refreshing Crops For Best Yields On Regular Intervals With New Seeds/Genetics Is Highly Recommended For Efficiency, But Is NOT Required For Profitability Of Production

One Acre Of Hemp Production Will Produce 4 Acres Worth Of Seeds To Replant The Next Crop With, To Sell To Other Farms, Or Export.

What will be harvest, and what will be done with the production?

- Products (Grain & Fiber)

- Root
- Stalk
- Seed (Grain)
- Flower

- Sales

- Animal bedding
- Animal feed
- Raw Hemp Oil
- Seed

- Research & Development

- HempCrete
- Fabrics
- Plastics
- Food products
- Industrial Technology

Globally, Hemp Is Here Or On Its Way!

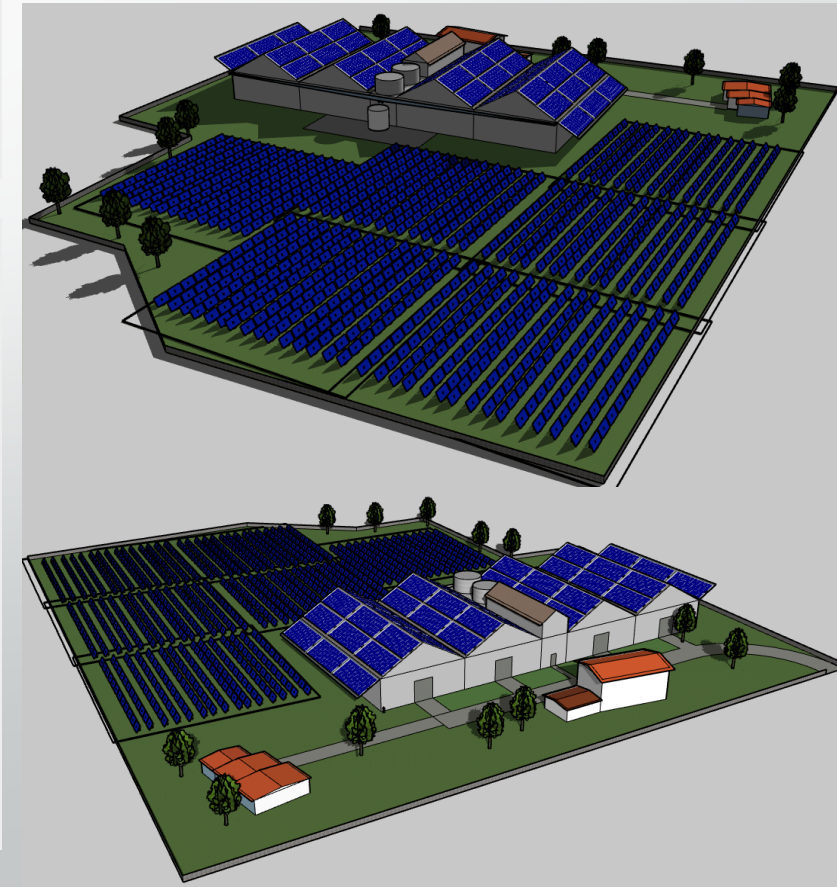
We are waiting on Government!

We urge all entrepreneurs to take example of how our consortium develops our Hemp Industry strategy.

Guyana will be one of the top 5 Industrial Hemp producers in the world!
The World's Markets and Monies Are Waiting On Us!

- Alesie Group and EAME have a Memorandum of Understanding with an International Consortium to develop an Agri-tech Park and Center of Excellence in Berbice. The campus will be producing construction and industrial materials from agricultural produce and waste.
- The Project is designed around clean renewable energy systems and sustainable practices. This would include the use of bagasse, rice waste, and hemp as potential feedstocks for these new manufacturing processes.
- Of these, Hemp has the most versatile potential range of such products. The Partners in these projects would be undertaking collaborative R&D in Guyana seeking to develop novel, and high value applications for Hemp the moment it is permitted to be grown and harvested locally.

**Actual Design Drawing Of Alesie Facility
in Berbice*



What products are to be exported, and to which markets?

- Export Products

- Hurd (Stalk)
- Flower
- Grain (Seed)
- Oils (if extraction is possible)

- Markets

- All Markets based on the international trade teams of Alesie Group, Colorado Hemp Project, Neurvana International, and EAME.

Expected quantities of products from the trial 100 acres?

- 10 acres

- 1000 lbs per acre of flower
- 1500-2000 lbs of biomass (stalk)
- Approx. 3500 lbs per acre of full plant biomass

- 90 acres

- 800 -1000 lbs of seed per acre
- 2000 – 3500 lbs of stalk (dependent on crop density)

What kind of revenues can government expect from an acre of Hemp?

- *We suggest the government implement a taxation structure similar to the other agriculture industries.*
- *Processing Requirement for Export Clearance.*
 - *Rather than allowing the added value of processed goods being lost to every other country in the world, The Government of Guyana should require at least a 10%-20% requirement of local processing value to be added, before a product is allowed to be exported.*
 - *This will allow added value to stay within Guyana, allowing for more volume of taxable income.*
 - *This is based on not losing money and/or fleecing the agro-economy of Guyana by selling a raw material.*
 - *The senseless export of Rice Paddy in Guyana's Rice Industry, simply gives away at least 15%-20% of profits/income that could be held within Guyana.*



Will there be chemicals used?

- No, 100% Organic Production.

What is the total input per acre?

- CBD

- \$5000-\$7000 per acre cost of production for the initial crop
 - Second year is cheaper because we don't have to buy seeds again
- \$10,000 - \$50,000 revenue per acre
 - Price variance based on
 - Quantity bought at the time
 - Quality

- Industrial Crop

- \$250 - \$1000 per acre cost of production for the initial crop
 - Second year is cheaper because we don't have to buy seeds again
- \$1500 per acre for complete production buys
- \$3000 - \$10,000 revenue per acre
 - Quantity bought at the time
 - Quality